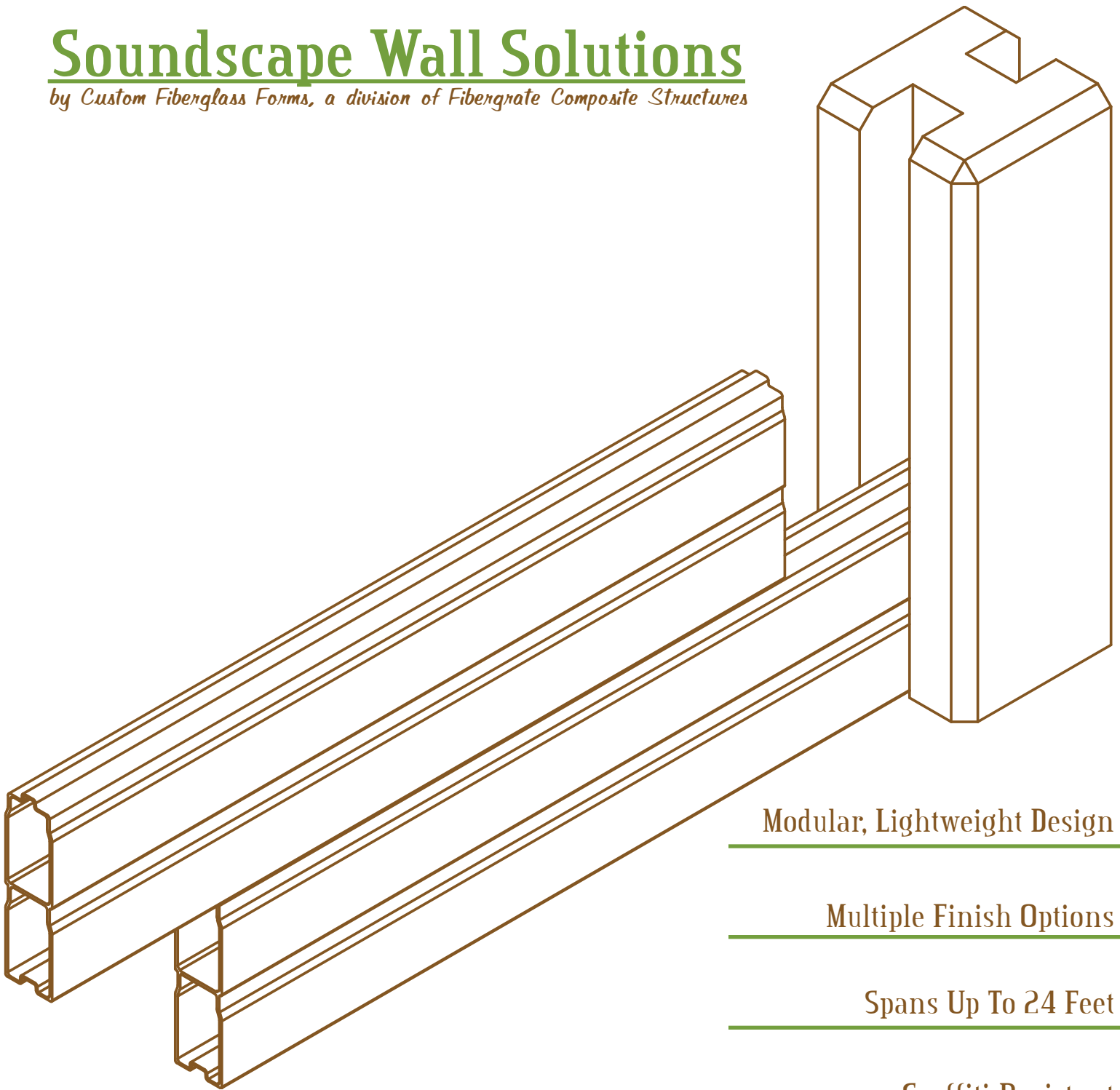


Soundscape Wall Solutions

by Custom Fiberglass Forms, a division of Fibergrate Composite Structures



Modular, Lightweight Design

Multiple Finish Options

Spans Up To 24 Feet

Graffiti-Resistant

ISO 9001-2000

Spanning the Gap Between Performance and Value

Custom Fiberglass Forms Division

Since 1966, Fibergrate Composite Structures has participated in over 21,000 fabrication installations worldwide. Fibergrate's design and manufacturing capabilities are global with three manufacturing facilities and worldwide distribution. As the world of composites and composite technology advances; Fibergrate, a member of the RPM International, Inc. (NYSE: RPM) family of companies, leads the revolution.

Custom Fiberglass Forms, a division of Fibergrate Composite Structures, specializes in custom fiberglass reinforced plastic (FRP) products for original equipment manufacturers (OEM) and the architectural community. Custom Fiberglass Forms works directly with customers and industries to develop individualized solutions to solve old problems, create new products or improve the quality of existing products. Our design team has years of experience creating custom FRP solutions for numerous public projects like zoos, aquariums, water parks, sunscreens, fountains, pedestrian bridges and playground equipment.

Custom Fiberglass Forms' premier product line begins with the [Soundscape Wall Solutions](#)' sound barrier wall. [Soundscape](#) is a fiberglass reinforced plastic barrier manufactured through a high-quality pultrusion process. [Soundscape Wall Solutions](#) has developed a superior light and noise barrier wall that meets all AASHTO and DOT guidelines. With a Sound Transmission Class (STC) of 30, the [Soundscape](#) wall will provide the needed sound reduction for congested traffic or retail areas. In addition, the class 1 fire-retardant FRP material is lightweight allowing for fast modular installation and the ability to use even in challenging terrain. The [Soundscape](#) wall can span up to 24 feet and requires no heavy equipment for installation or repairs which will minimize disruption to traffic and damage to surrounding vegetation. The FRP material will not corrode, rust or rot and is graffiti, moisture and freeze thaw resistant meaning that once it is installed, the [Soundscape](#) wall maintains its aesthetic beauty for 50 plus years of service life.

Applications

Residential Developments

Shopping Centers

Industrial Sites

Schools

Railroads

Highways

Restaurants

Commercial Sites

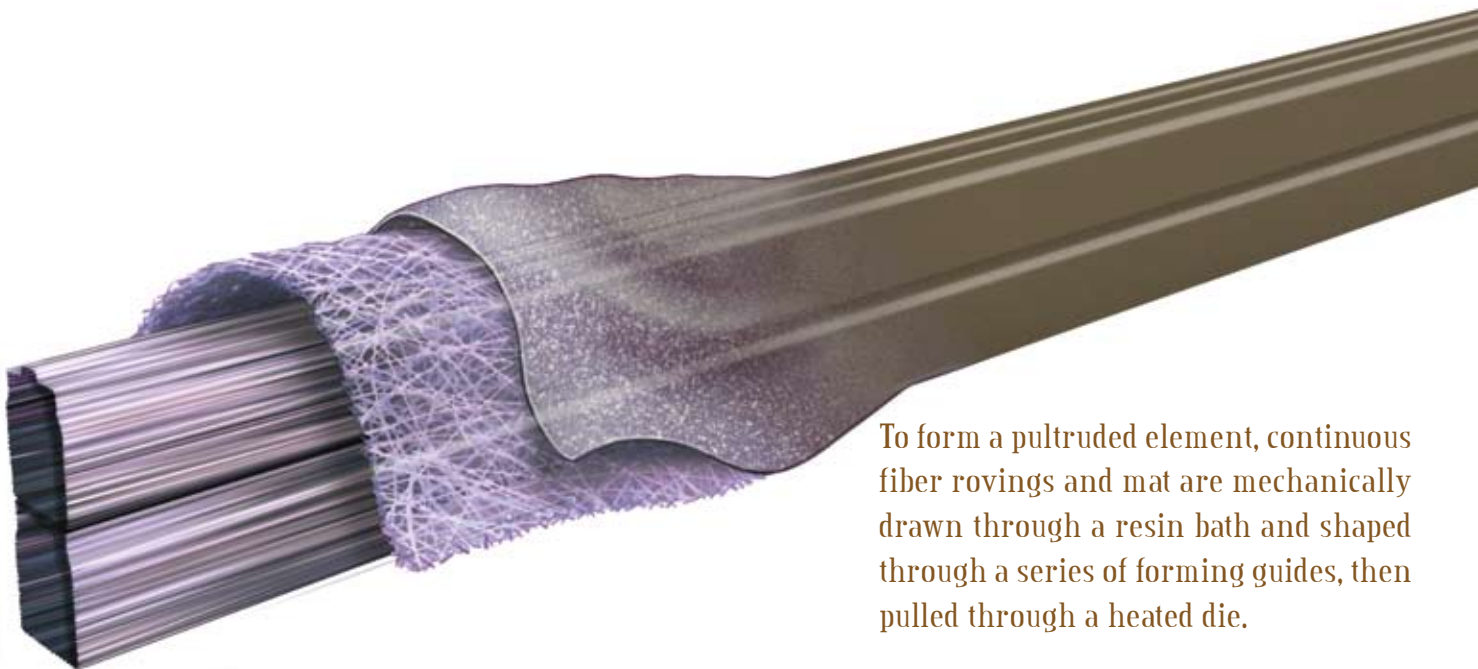
Recreational Facilities

Soundscape™ Soundwalls

The Soundscape FRP walls provide *the* solution for sound barrier wall installations. The strength and benefits of Fibergrate's FRP products continue with this product line. With the economical process of pultrusion, Soundscape planks will outperform, cost less, last longer and install faster than other noise wall options.

Soundscape Sound Barrier Features:

- ✓ Meets or exceeds all ASSHTO and DOT guidelines
- ✓ Modular, lightweight design
- ✓ Sound Transmission Class of 30
- ✓ Multiple Finish Options
- ✓ Graffiti, moisture and freeze thaw resistant
- ✓ Will not crack, corrode, rust, warp or rot
- ✓ No heavy equipment required for installation or repairs
- ✓ Stronger and more resilient than other choices
- ✓ 50 plus years of service life
- ✓ Lowest life cycle cost
- ✓ Structurally self supporting: no need for footing under panels
- ✓ Optional concrete, steel, wood or FRP I-beam
- ✓ Repairs and modifications can easily be made on-site

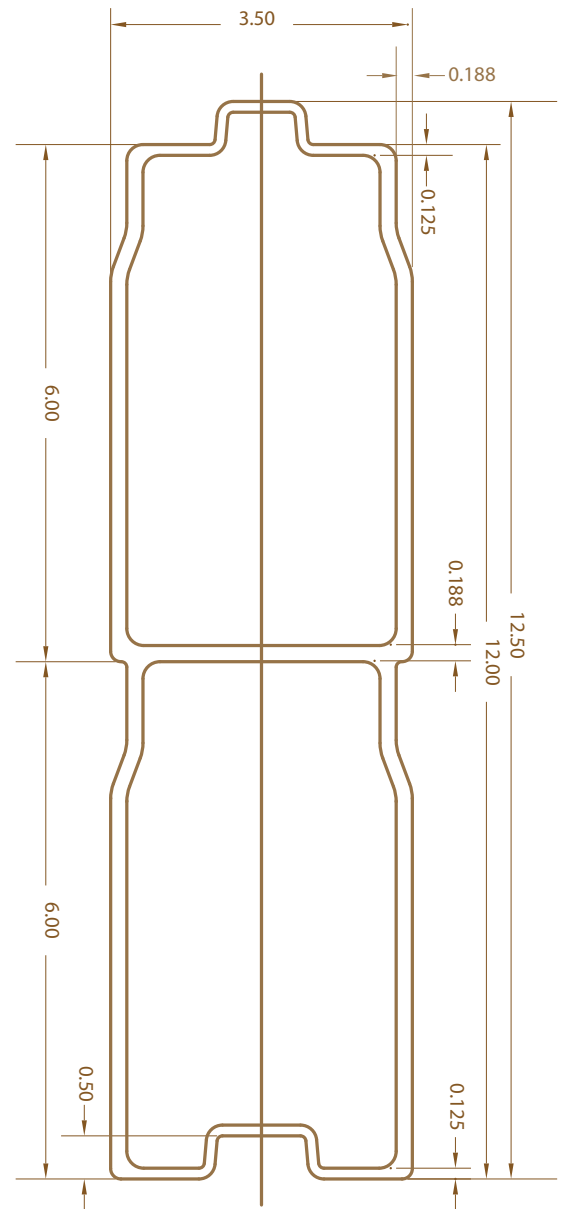


To form a pultruded element, continuous fiber rovings and mat are mechanically drawn through a resin bath and shaped through a series of forming guides, then pulled through a heated die.

Details

All **Soundscape** walls meet or exceed all AASHTO and DOT guidelines. Each wall is made of interlocking tongue and groove fiberglass reinforced plastic planks set into concrete, steel, wood or FRP columns. The internal web design of the **Soundscape** plank minimizes deflection and allows each wall section to span up to 24 feet, greatly reducing the number of columns and caissons required for each project. The 12- inch high design minimizes the number of planks required per section while the tongue and groove configuration strengthens the assembled wall and eliminates the possibility of any gaps between stacked planks.

Soundscape Plank



Plank weighs 4.5 lbs/ft

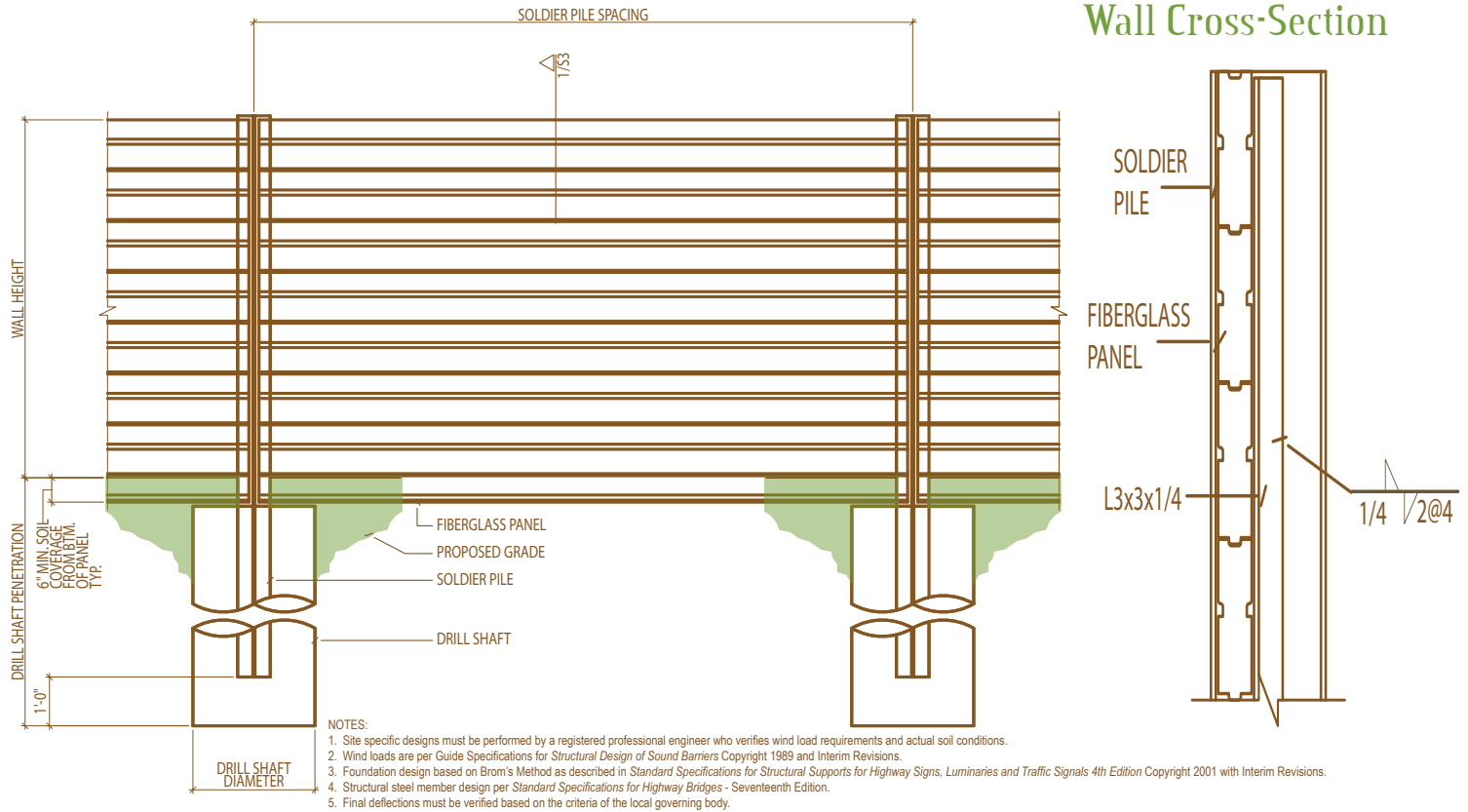
Specifying Soundscape is easy.
Find the specifications in text format
on our website
www.customfiberglassforms.com

Soundscape Material Properties

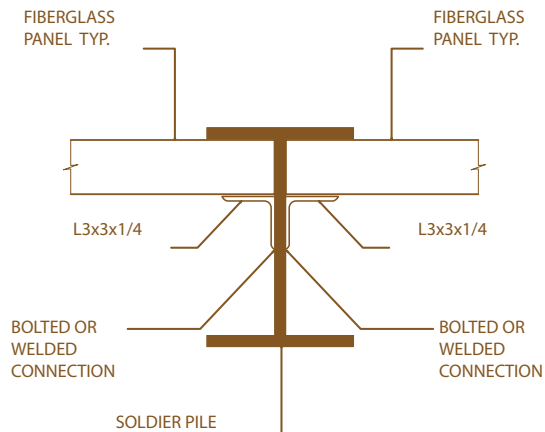
Properties	Test	Units	Value
Flexural Strength	ASTM D790	psi	30,000
Flexural Modulus	ASTM D790	x10 ⁶ psi	1.8
Tensile Strength	ASTM D638	psi	30,000
Tensile Modulus	ASTM D638	x10 ⁶ psi	2.5
Compressive Strength	ASTM D695	psi	30,000
Barcol Hardness	ASTM D2583	n/a	40
Impact Resistance	ASTM D256	ft-lbs/in	25
Sound Transmission Class (STC)	ASTM E90 ASTM E413	STC Rating	30
Surface Burning	ASTM E84	Flame Spread Index	≤ 25

Drawings and Connections

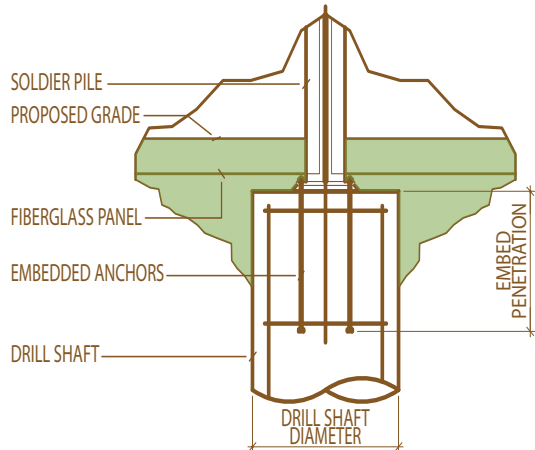
Typical Soundscape Construction



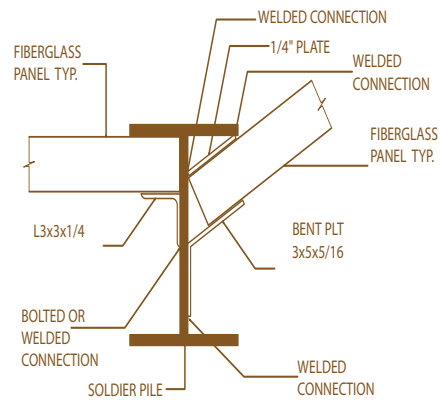
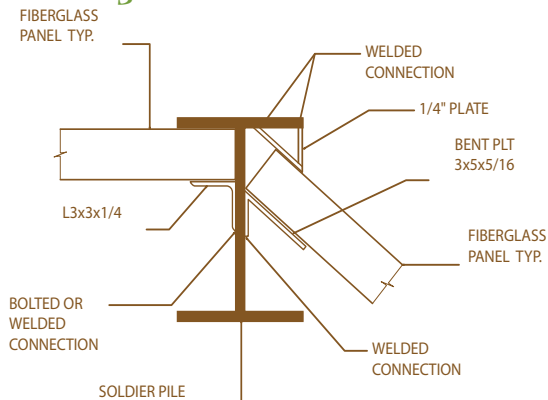
Typical Connection



Alternate Soldier Pile Configuration



Typical Angle Connections



The Classic Series

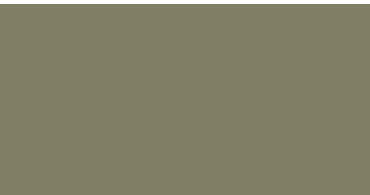
Standard Colors



SANDSTONE 33510



SAND 33617



TAN GREEN 34201



GRAY GREEN 34424



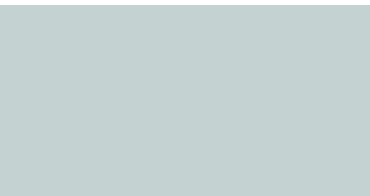
BLUE GRAY 35189



SKY BLUE 35526



AIRCRAFT GRAY 36300



LIGHT GRAY 36495

The **Soundscape** Classic Series is a smooth “shiplap” design available in 8 standard colors. The Classic Series is finished with a graffiti-resistant high-build coating of an Aliphatic Acrylic-Polyester Polyurethane to further increase resistance to corrosion, chemical abrasion and weathering. Classic Series planks of complementary colors can also be alternately stacked to build a custom pattern throughout the wall. The Classic Series **Soundscape** wall is also available in any custom color.



“The Soundscape design is one of high versatility, style and performance.”

Custom colors also available.

Due to manufacturing and printing processes, colors will vary from actual product.

The Artisan Series

The Artisan Series takes the Classic Series to a new level with the addition of a custom formulated facade of brick, block or stucco. The Soundscape Artisan Series soundwall finish consists of a blend of naturally colored quartz aggregates in a clear 100% acrylic binder over a pigmented acrylic emulsion primer and is applied using a custom template designed specifically for your project. An Artisan Series soundwall can be designed to match an existing structure or to make your wall a one-of-a-kind installation.



Aggregate Finishes

AS03 WOODBURY PINK



AS04 WHITE ASH



AS05 RIVER ROCK



AS06 CHAMPAGNE GRAY



AS02 STONY CREEK



AS07 SEDONA RED



AS08 EMERALD ISLE



AS10 MIDNIGHT STORM



Custom templates and aggregates available.

Due to manufacturing and printing processes, colors will vary from actual product.

Soundscape Wall Solutions is a division of Fibergrate Composite Structures Inc. Fibergrate, the inventor of molded grating and the leader in the industry, manufactures a full line of fiberglass reinforced plastic (FRP) products and services. For other applications, our Custom Fiberglass Forms' design team can provide a customized solution to meet your unique needs with all the features and benefits of FRP including corrosion resistance, light weight, slip resistance and low maintenance.



<-----Fibergrate® and Chemgrate® Molded Grating

The largest selection of molded gratings offering more than ten resins and twenty grating configurations, we have the right grating for your application.

Safe-T-Span® and CorGrate® Pultruded Grating----->

Our pultruded gratings offer unidirectional strength and corrosion resistance fitting for many applications.



<-----Dynarail® Handrail and Ladders

Modular and custom systems available to meet OSHA and strict building code requirements for safety and design.

Dynaform® Structural Shapes----->

A full line of structural shapes including bars, rods, tubes, beams, channels and leg angles.



<-----Stair Solutions

Fibergrate offers a wide range of slip-resistant products to meet your stair safety needs whether new construction, repair or replacement.

Services----->

With 40 years of experience with FRP applications, Fibergrate also provides a full line of services including manufacture, design, fabrication and installation.



Soundscape Wall Solutions

by Custom Fiberglass Forms, a division of Fibergrate Composite Structures

5151 Beltline Rd, Ste 700 Dallas, Texas 75254

800-527-4043 Fax 972-250-1530

www.customfiberglassforms.com

Soundscape Wall Solutions, 2006 888800-08/06-2.5 Printed in the USA

Fibergrate Composite Structures believes the information contained here to be true and accurate. Fibergrate makes no warranty, expressed or implied based on this literature and assumes no responsibility for consequential or incidental damages in the use of these products and systems described, including any warranty of merchantability or fitness. Information contained here is for evaluation only.